

PART LIST

REF	NAME OF PARTS	MATERIAL	REMARK
1	BODY	ASME SA217-WC6	
2	BONNET	ASME SA217-WC6(NORMALISING)	
3	BODY STUD	A193-B16	GALVANIZED
4	BODY STUD NUT	A194-Gr.4	GALVANIZED
5	SEAT RING	A276-420 ST.ST.(or SUS 420J2)	
6	UPPER CAGE	A276-420 ST.ST.(or SUS 420J2)	
7	PLUG & STEM	A479-316 ST.ST.(or SUS 316L)	
8	DISC	A276-420 ST.ST.(or SUS 420J2)	
9	DISC UPPER PLATE	A276-420 ST.ST.(or SUS 420J2)	
10	DISC LOWER PLATE	A276-420 ST.ST.(or SUS 420J2)	
11	BONNET GASKET	316 ST.ST. & GRAPHITE	
12	CAGE GASKET	316 ST.ST. & GRAPHITE	
13	SEAT GASKET	316 ST.ST. & GRAPHITE	
14	PACKING	GRAFOL	
15	PACKING FOLLOWER	316 ST.ST.	
16	PACKING FLANGE	316 ST.ST.	
17	PACKING RING	316 ST.ST.	
18	PACKING BOLT	316 ST.ST.	
19	PACKING NUT	316 ST.ST.	
20	PACKING NUT(S)	316 ST.ST.	
21	POSITIONER	SIEMENS 6DRS220-(0EG00-0W40-F01)	
22	FILTER & REGULATOR	WVC WVC-200	
23	BOOSTER	WVC WVC-300	
24	LOCKUP VALVE	WVC WVC-4000	

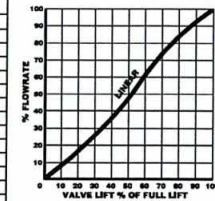
DATA

MODEL	BY990
BODY SIZE	85mm(2 1/2") ASME 2500#SPL/BW
ACTUATOR	DOUBLE ACTING 200 SQ.IN.
TRIM	LINEAR X-STREAM
HANDWHEEL	SIDE-MOUNTED
POSITIONER	SIEMENS 6DRS220-(0EG00-0W40-F01)
TRANSMITTER	INTEGRAL WITH POSITIONER
FILTER REG.	WVC WVC-200
LIMIT SWITCH	NONE
BOOSTER	WVC WVC-300
SOLENOID V/V	NONE
LOCKUP V/V	WVC WVC-4000
SNAP ACTING	NONE
VOLUME TANK	NONE
JUNCTION BOX	NONE
VALVE/ACTUATOR WEIGHT	APPROX. 400 Kg
QUANTITY	2 SETS

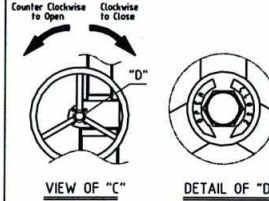
NOTES :

- * AIR CONNECTION/ MATERIAL : 1/4" NPT(M)X1/2" NPT(F)/ 316SS
- * ELECTRIC CABLE CONDUIT CONNECTION : 3/4" PF(F)
- * TUBE AND FITTING MATERIAL : 316SS
- * STROKE TIME : < 10.0 Sec

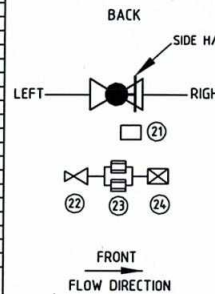
FLOW CHARACTER CURVE



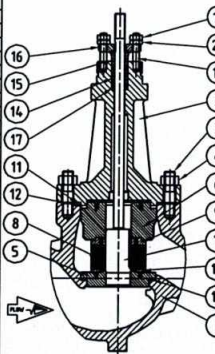
HANDWHEEL ROTATION



HANDWHEEL & ACCESSORIES LOCATION



TRIM & PACKING PARTS

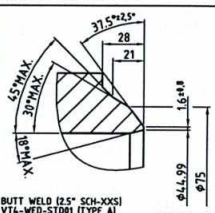


PACKING : GRAFOL

TRIM : X-STREAM

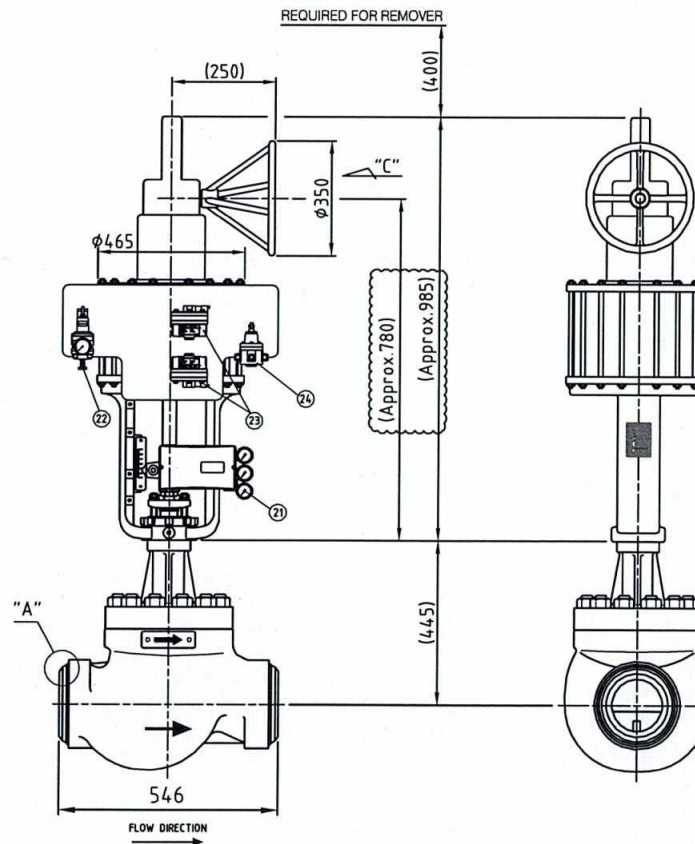
SOLID

WELD DETAIL-A



BUTT WELD (2.5" SCH-XKS)

WELD-STD01 (TYPE A)



1. ALL DIMENSIONS AND TOLERANCES ARE IN MILLIMETERS UNLESS OTHERWISE NOTED.
2. FINISHES: UNLESS SPECIFIED: A. BLANKS - BLANKS; B. BLANKS - BLANKS; C. BLANKS - BLANKS.
3. THE LOCATION AND USE OF TYPING CHARACTERS ARE SHOWN IN THE DRAWING ONLY AND SUBJECT TO CHANGES DURING ENGINEERING WORK.

FOR APPROVAL

APPROVED	DATE	BY	FOR APPROVAL
DESIGNED	DATE	BY	FOR APPROVAL
CHECKED	DATE	BY	FOR APPROVAL
REVIEWED	DATE	BY	FOR APPROVAL

POWER GENERATION CORPORATION 3
SINGAPORE VINH TAN THERMAL POWER PROJECT MANAGEMENT BOARD
2008 VINH TAN

POWER ENGINEERING CONSULTING 25 COMPANY 1

VINH TAN 4 THERMAL POWER PROJECT
(BOILER x 2 units)

DRAWING FOR
CONTROL VALVES
OF BOILER

Y14-Y105-POZEN-350006

31 of 60